

Activity 2A: Drawing Contour Lines

Follow these Rules for Drawing Contour Lines:

- Contour lines connect points with the **same** elevation.
- When drawing contour lines, connect the data points with **one**, smooth line avoiding sharp angles.
- Contour lines never cross, branch off, or touch each other (there are exceptions).
- When contour lines cross streams they point towards the higher elevation.
- If a contour line is close to the perimeter of the map & does not form an enclosed circle, continue it to the edge of the map.
- Use a **pencil** to draw the contour lines and if you make a mistake, **erase** completely. You could also complete the map digitally.

Helpful tips:

- *Before you start drawing contours lines, note the location of the highest elevation, the lowest elevation, any water bodies, and the contour interval.*
- *It is usually easier to start with the contour line that has the lowest elevation.*
- *Only work on one contour line at a time!*

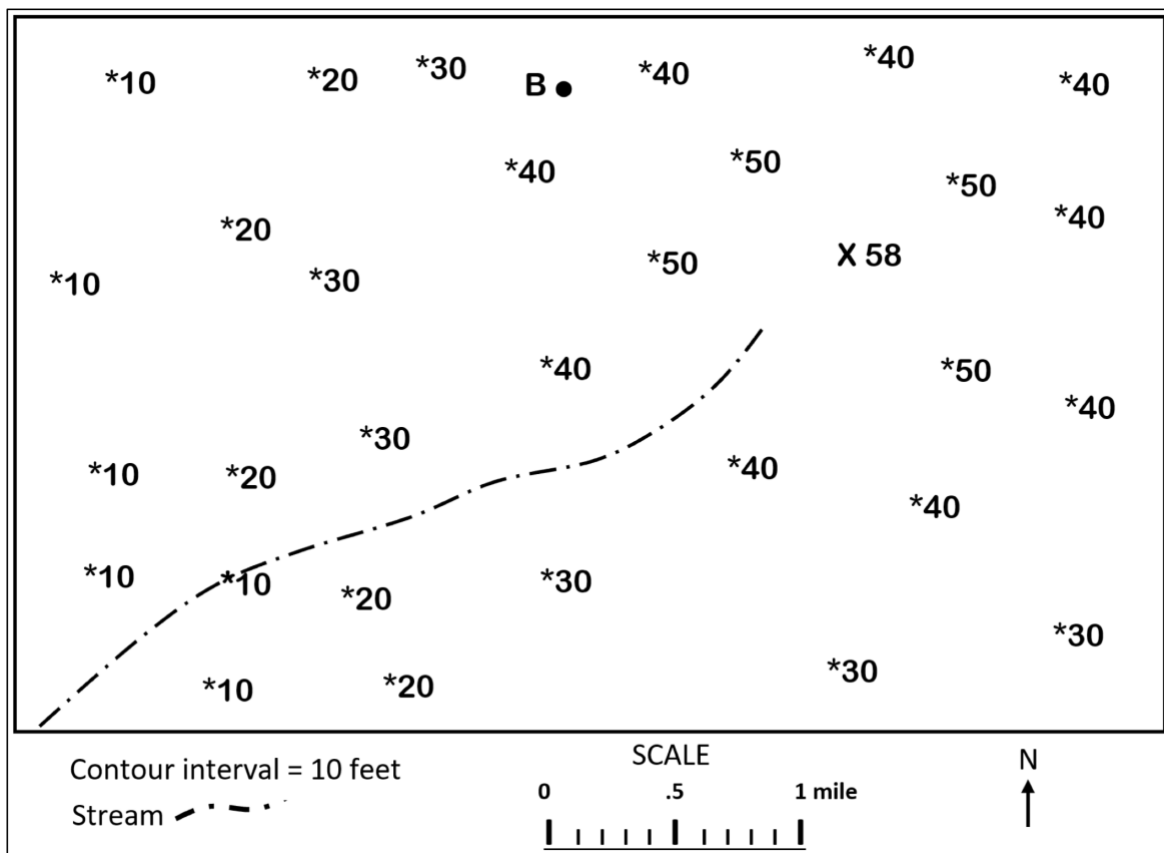


Figure 2.21: Elevation points to practice drawing contour lines (CC-BY 4.0; Cynthia Lampe, own work).

Name: _____

Activity 2A

1. With a **pencil (or digitally)**, draw in contour lines on **Figure 2.21** using a 10-foot contour interval.
2. Answer the following questions based on the contour map you have completed,
 - a. In what **direction** does the stream flow?
 - i. How were you able to determine the direction?
 - b. What is the distance from the **highest hill** to point **B**?
 - i. How were you able to determine point **B** is near a hill?